



B107/1 Avenue Of Europe Newington NSW

3  2  2 

Welcome to your dream home in the heart of Newington! This exceptional 3 bedroom, 2 bathroom, double car space residence combines modern living with urban convenience. Its spacious layout and stylish design make it perfect for families, professionals, or downsizers looking for a vibrant lifestyle. Enjoy easy access to local amenities and parks, ensuring a lively and connected community experience. Discover the best of both comfort and location in this exceptional property!

Key Features:

- ? Resort-style amenities including a pool, gym, spa, and sauna
- ? Open-plan living and dining area that flows to the outdoor terrace

Type : Apartment
Price : Auction Unless Sold Prior
Building Size : 223 sqm
View : <https://www.nvre.com.au/8175215>



Chuck Lee
02 9751 9000



Dorothy Vincent
9751 9000

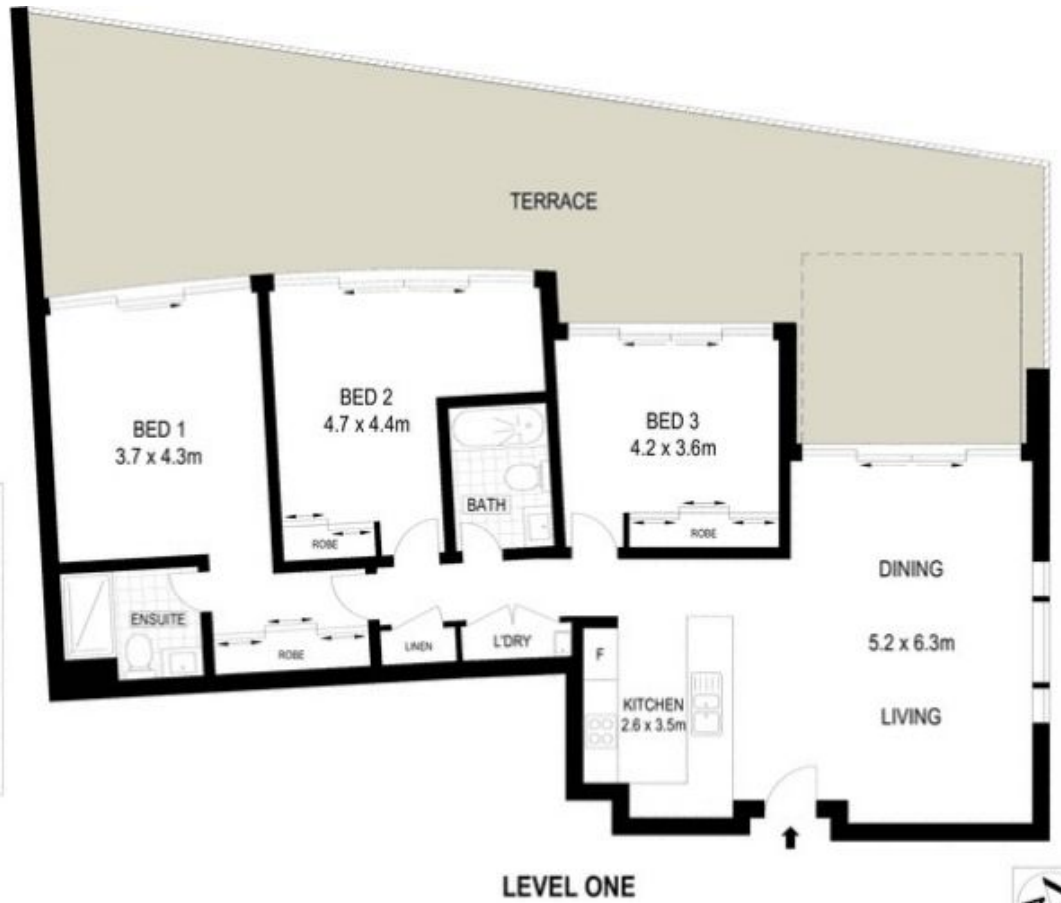
[For full version visit the website](https://www.nvre.com.au)



BASEMENT LEVEL



BASEMENT LEVEL



0 1 2 3 4 5

Scale in metres. Indicative only. Dimensions are approximate. All information contained herein is gathered from sources we believe to be reliable. However we cannot guarantee its accuracy and interested persons should rely on their own enquiries



B107/1 Avenue of Europe, Newington