



6/3 Nurmi Avenue Newington NSW

3  3  2 

This Wow-factor maisonette apartment showcases contemporary flair throughout with impressive proportions, a light-filled two-level layout and panoramic views over the surrounding area. Set on the top floor of a quality building, it offers a fresh and airy living space with a flowing floorplan that takes full advantage of natural light and the elevated outlook.

A premier location that's central to all of Newington's attractions which includes Newington Marketplace with Woolworths, medical centre, local shops, restaurants and cafes with easy access to transport, sporting facilities and the M4. The location is perfect for young families with Newington Public School close by, beautiful leafy parks with playgrounds, off-leash dog park and nature walkways.

Type : Apartment
Price : \$970 Per Week
View : <https://www.nvre.com.au/8156629>

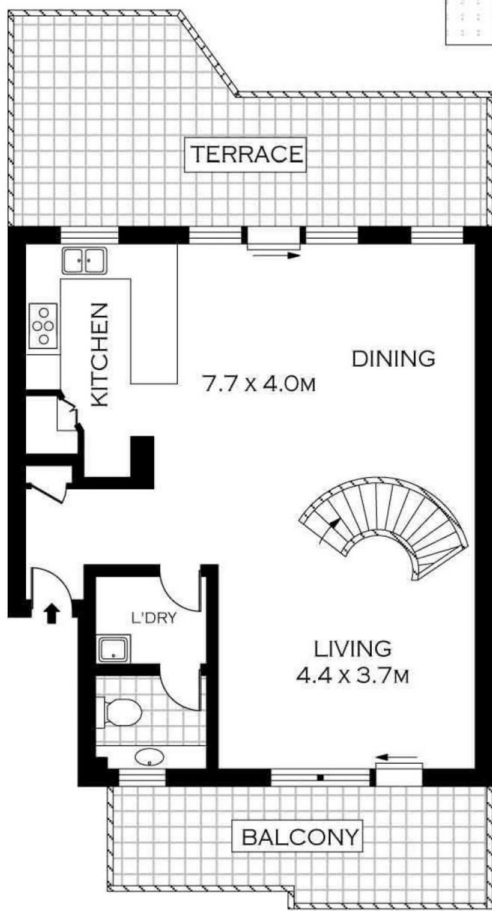
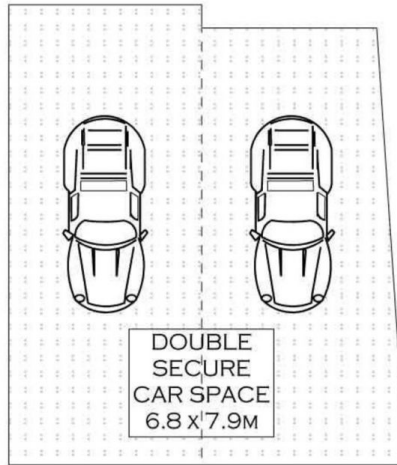


Moxuan (Jeremy) Gong
 02 9751 9000

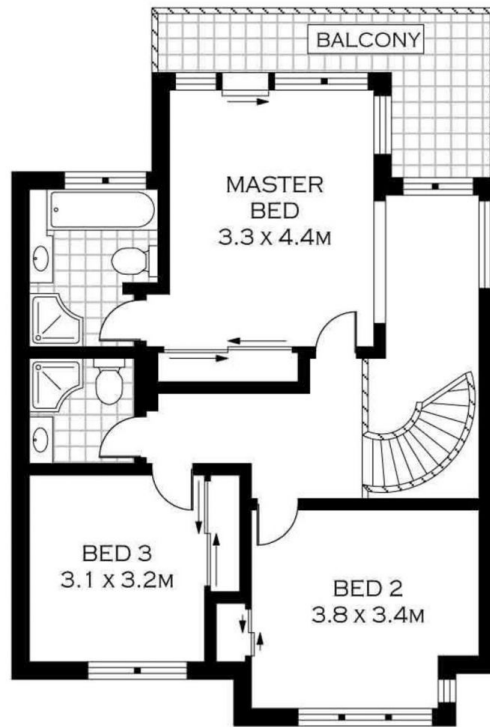


Suk-Jae (Jae) Yang
 02 9751 9000

[For full version visit the website](https://www.nvre.com.au)



THIRD FLOOR



TOP FLOOR

INT : 135.45M²



PLANS SHOWN ONLY INDICATIVE OF LAYOUT. DIMENSIONS ARE APPROXIMATE.
Floor plans by www.remaustralia.com
Ref. No: 10692

6/3 NURMI AVENUE

NEWINGTON