






4 Kosmala Close Newington NSW

4  3  2 

This generous residence offers the ideal family lifestyle. Boasting quality finishes and a versatile floor plan, the home delivers spacious living and dining areas, a large courtyard and tranquil garden setting.

Price : \$1250 Per Week

View : <https://www.nvre.com.au/8052916>

4 Kosmala Close accommodates the growing family and is located on a very quiet street. Enjoy the benefits of the home's central location. Walk to transport, parks, school and village shops. Fitness and cycle tracks, plus the award-winning facilities of Sydney Olympic Park are all on your doorstep.



Moxuan (Jeremy) Gong
02 9751 9000



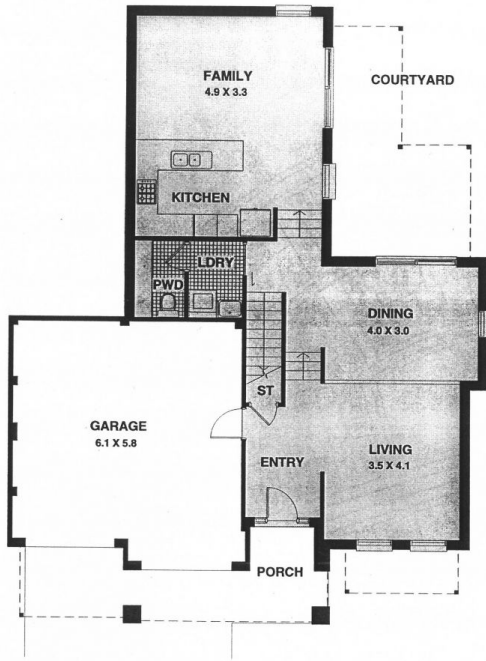
Suk-Jae (Jae) Yang
02 9751 9000

Features include:

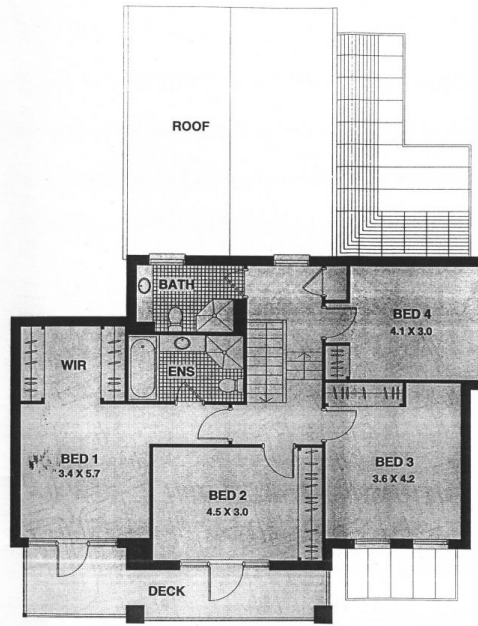
- New carpet and paint
- Ducted Heating and Cooling
- Double auto garage
- Four generous bedrooms with built-ins
- Master retreat with ensuite and walk-thru wardrobes
- Upstairs balcony off bedrooms 1 & 2
- Laundry and powder room on ground level
- Glass sliders off dining and family area lead to outdoor area
- Double auto garage with plenty of storage space

*more photos coming soon.

4 KOSMALA CLOSE
LOT 2017



GROUND FLOOR
LOT 17



FIRST FLOOR

NOTE:
ROOM SIZES TO SOME
BEDROOMS ARE TAKEN
TO BACK OF ROBE

