



19 Heidelberg Avenue NEWINGTON NSW

3  2  1 

Privately positioned in a highly sought-after area of Newington, this popular Lawson style 'C' shape home creates an immediate impression of space and natural light. The home offers a versatile floor plan, complimented by spacious living areas and child-friendly surroundings, all within walking distance to school, shops, parks and transport.

Highlights include:

- North facing freestanding home set back from the street
- 3 generous bedrooms with built-ins, high ceilings
- Master bedroom with balcony, plus ensuite with bath & separate shower
- 2 well-appointed bathrooms and powder room, separate laundry
- Modern granite kitchen overlooking spacious family/meals area

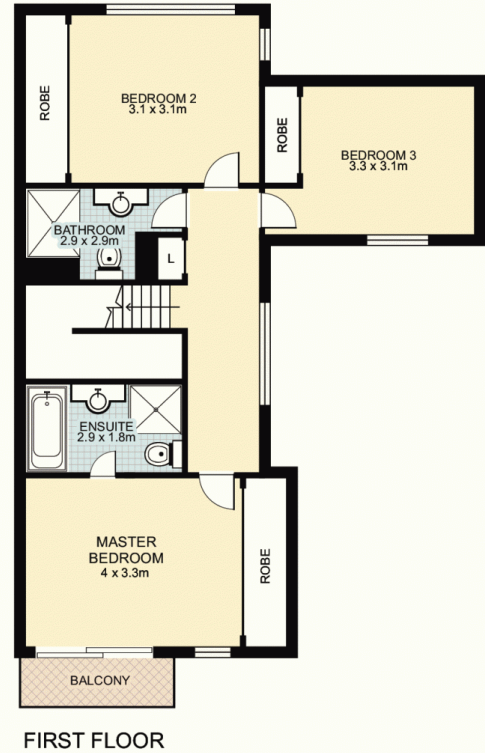
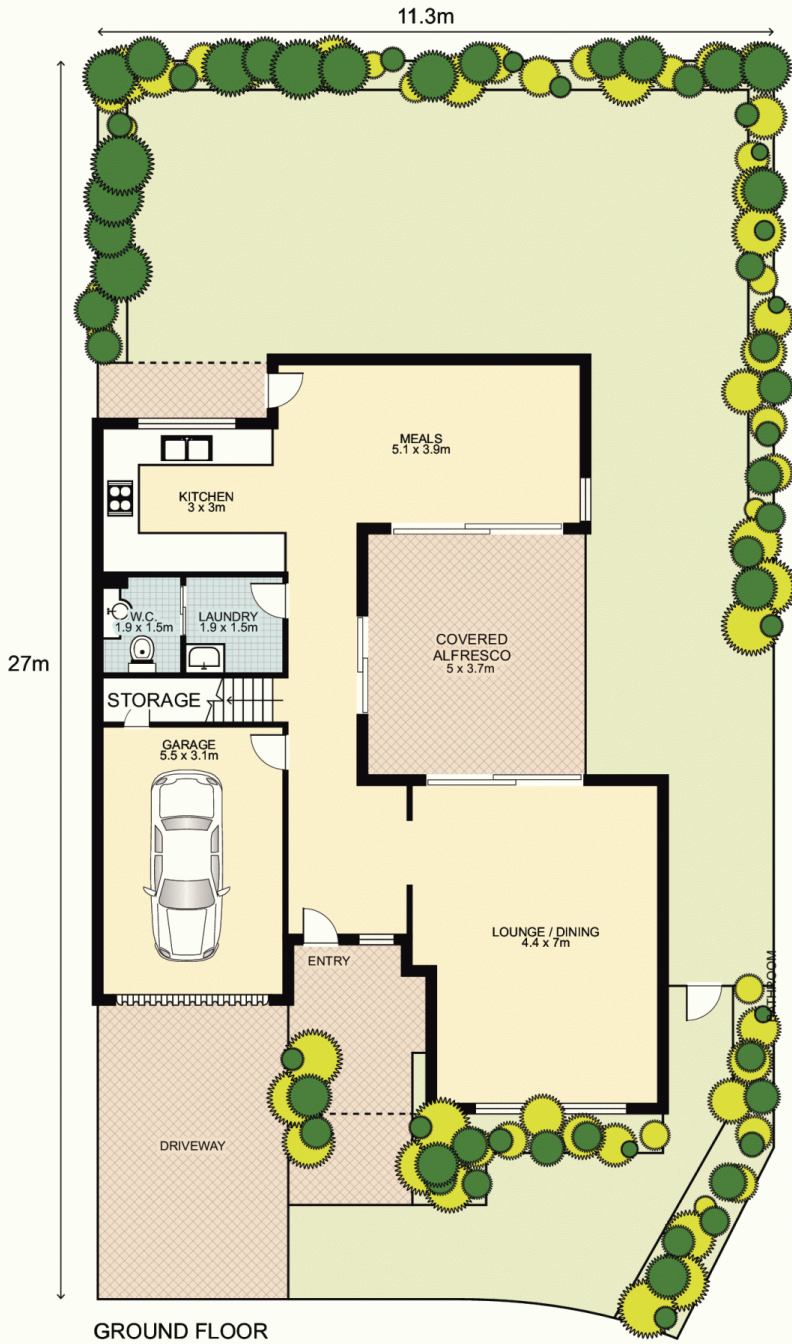
Land Size : 294 sqm

View : <https://www.nvre.com.au/5400540>



Chuck Lee
02 9751 9000

19 Heidelberg Avenue, NEWINGTON



Approx. Total Area : 146.99m²



Plans by
surroundpix
com.au

1300 30 32 40

This floor plan is intended as a guide only. Layout dimension are approximate only. No representation or warranties of any nature whatsoever are given or intended. Any person using this information should rely on their own enquiries.